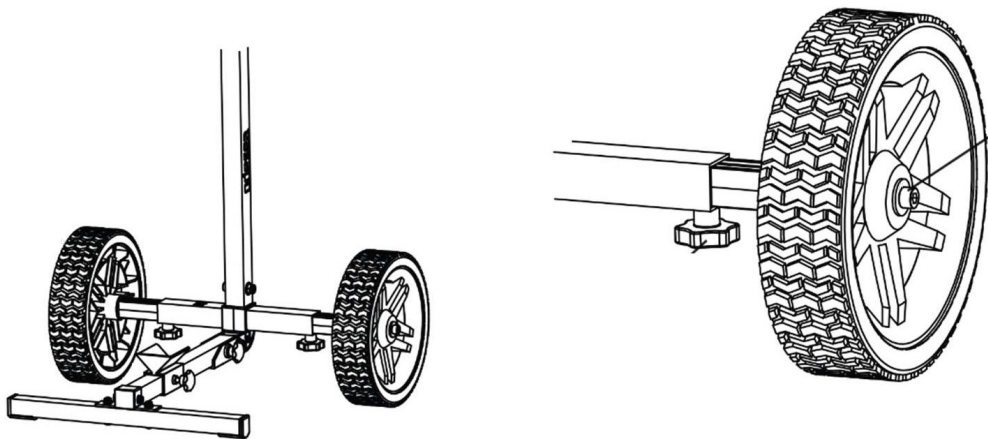
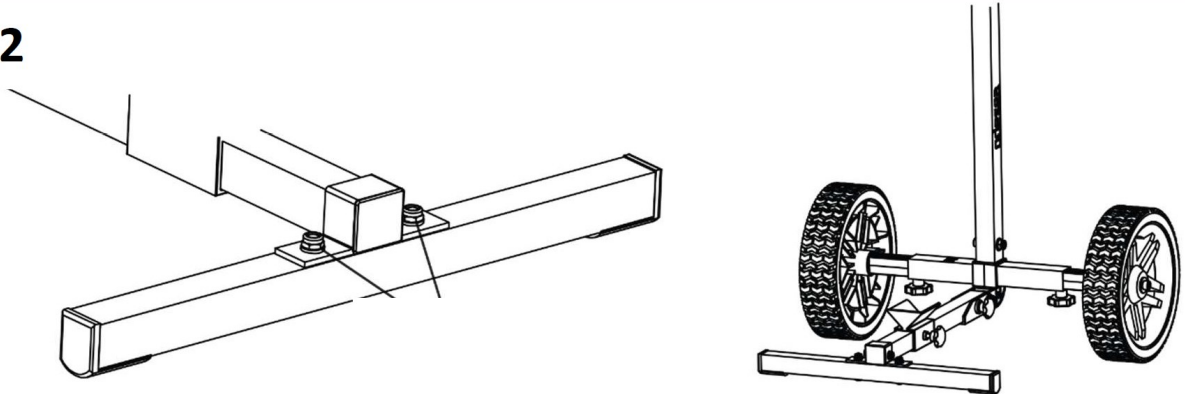


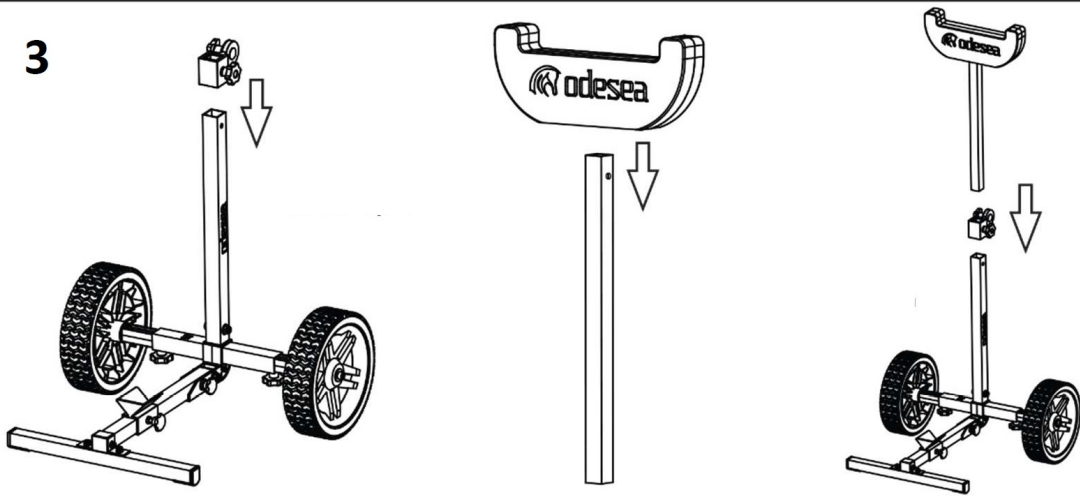
1



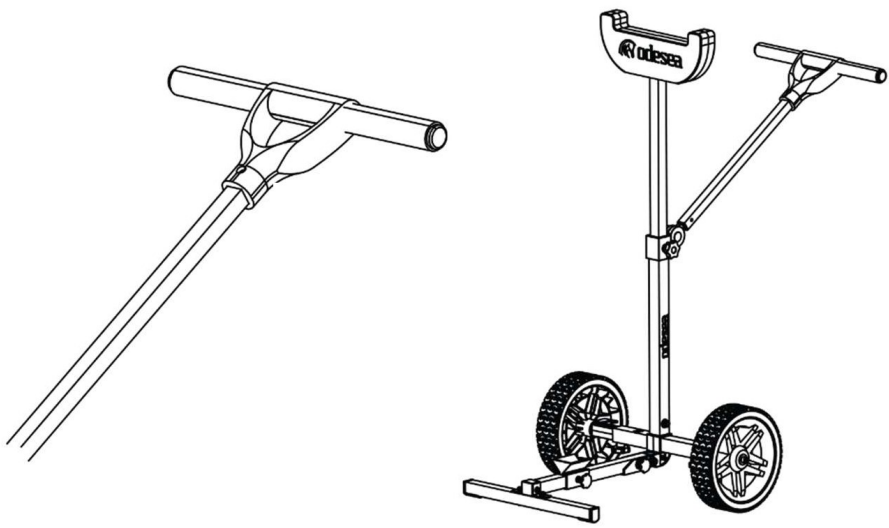
2



3

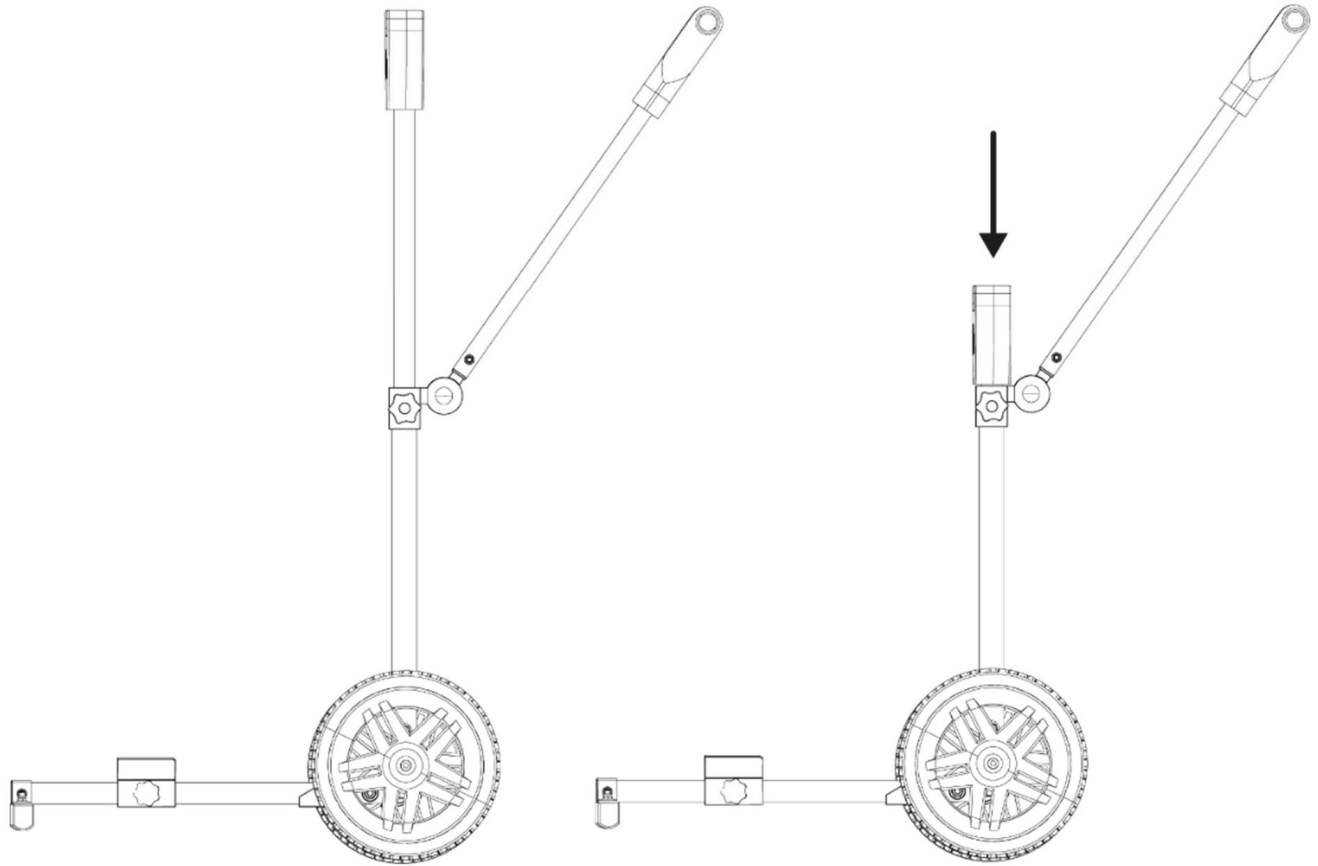


4

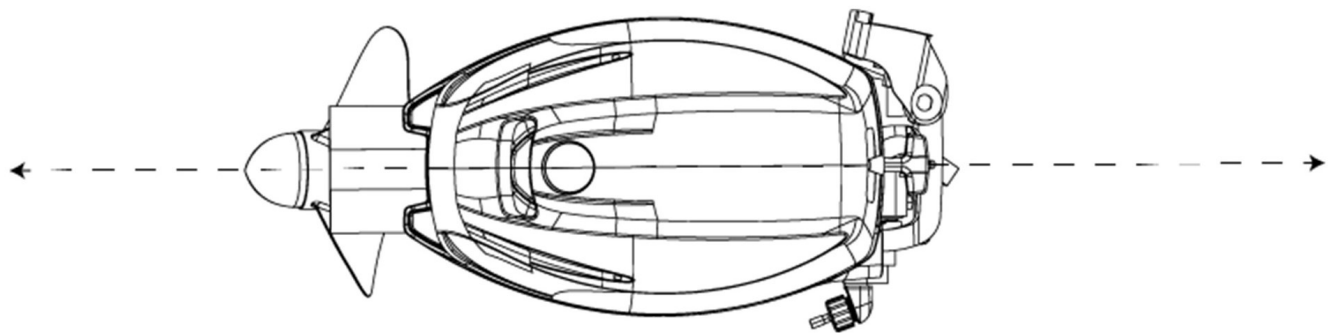


Setting up the trolley for your engine

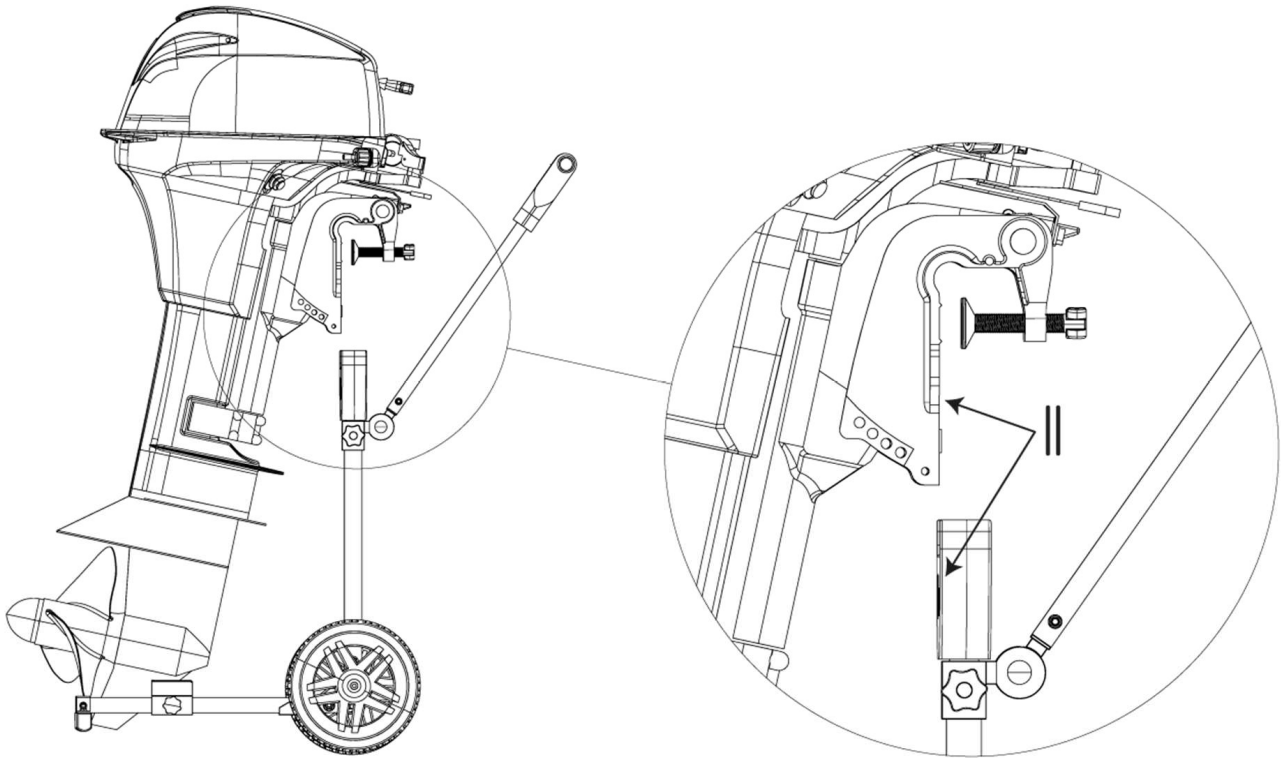
Step 1. Lower the trolley bracket to lowest position



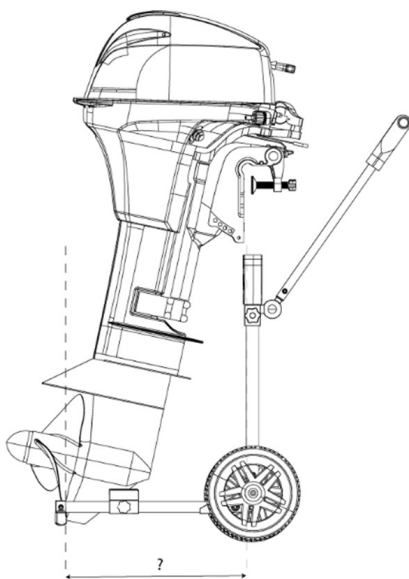
Step 2. Lock the engine in straight position



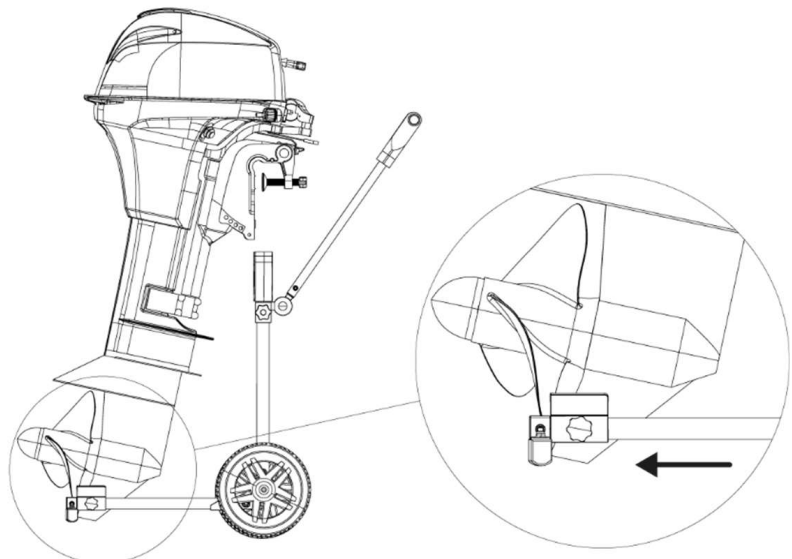
Step 3. Position the engine on the ground next to the trolley, with the back of the engine clamp parallel to the front of the trolley bracket.



Step 4. Measure the horizontal distance between the bracket and the end of the engine tail.



Step 5. Slide the tail support to the previously measured position on the tube and tighten the knob.



Now the trolley is set up for your engine. This does not need to be changed when you only use this specific engine on the trolley.

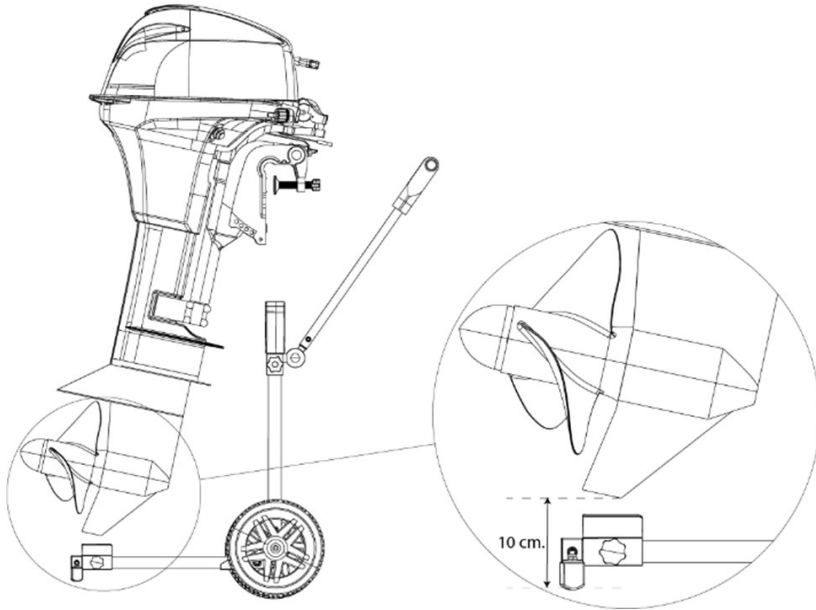
Note: it is possible to use the outboard trolley as a single person.

The TX-65 outboard motor trolley is ready for mounting an outboard engine after being fully assembled and set up for your outboard engine. To mount an outboard engine onto the trolley, please read the following steps carefully.

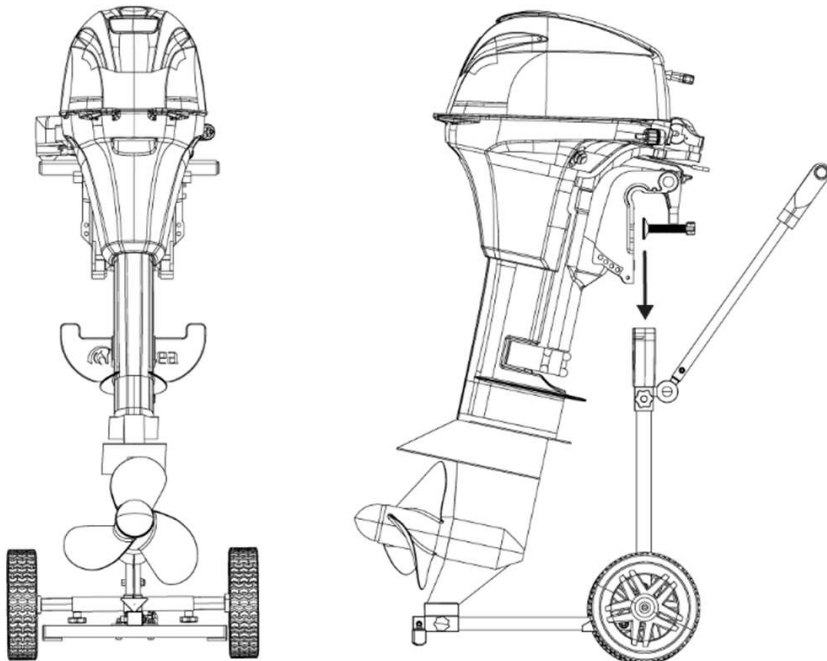
Make sure that:

- the wheels are set to the maximum width and the knobs are turned tight
- the tube with the bracket is down so that the bracket rests on the frame
- the knob of the horizontal tube is tight

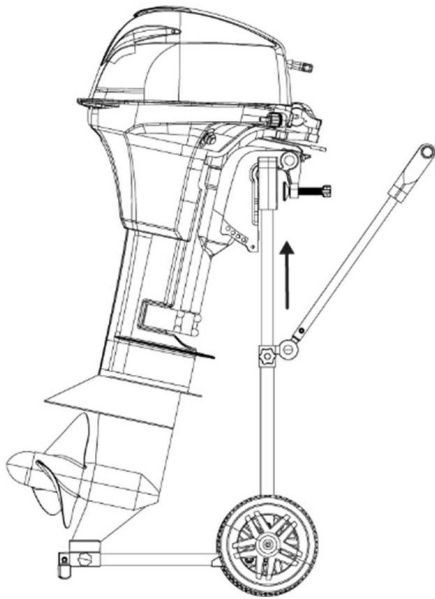
Step 1: Lift the outboard engine about 10 cm high and place the tail of the outboard engine in the tail-support. Use 2 hands!



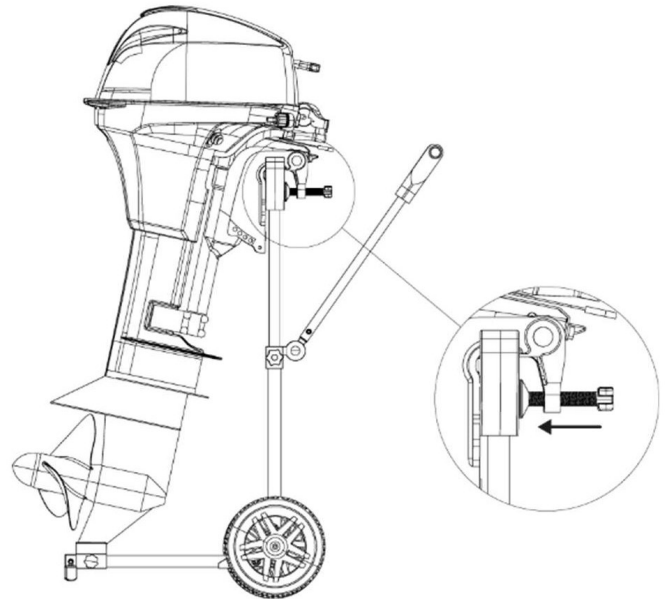
Step 2: Tilt the outboard engine so that it is straight above the bracket.



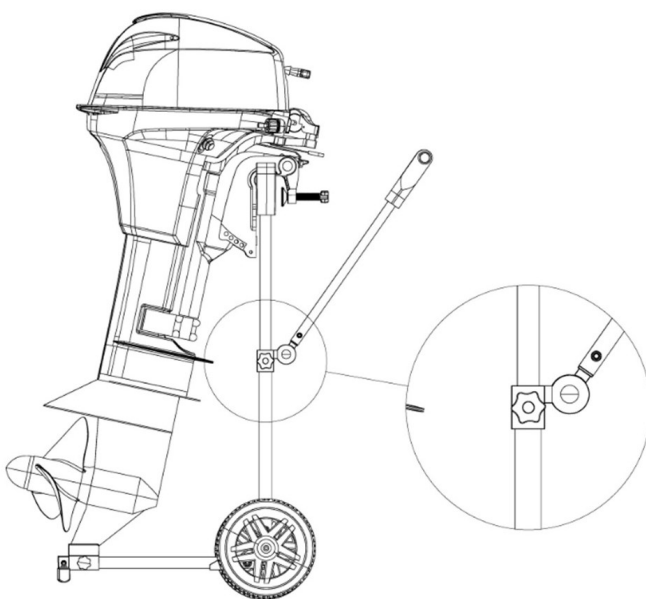
Step 3: Hold the engine with 1 hand. With the other hand lift the trolley bracket until it cannot go any higher.



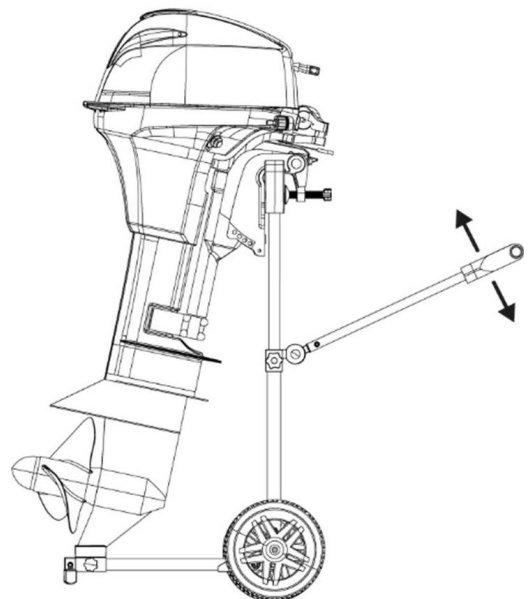
Step 4: Tighten the knob of the tube with the bracket to fix it in position.



Step 5: Hand tighten the clamp screws of the outboard engine to the trolley bracket.



Step 6: Adjust the handle to your desired height.



Now your outboard trolley is ready to go!

DISCOVER THE NEW

OdeSea Outboard Motor Trolley



WWW.ODESEA.COM

TX-65

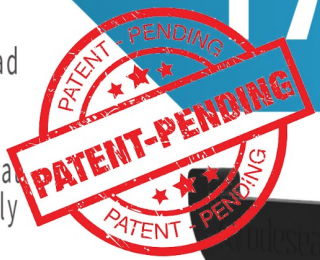
PRO

The smart solution to handle your outboard motor

OdeSea is the first outboard motor trolley without any welding. The trolley is lightweight and stable because it's made of aluminium instead of steel.

The new TX-65 Pro version has a weight reduction of 50%, weighing in at only 4 kg. The new OdeSea TX-65 Pro is universal adjustable to perfectly fit any outboard motor up to 15 HP. The solid square tube design and fastening mechanism gives the trolley the strength and stability to handle any outboard motor up to 60 kg safely and virtually without effort.

The non corroding aluminium and other used materials will ensure a long life. Making the TX-65 Pro the most durable and sustainable solution on the market.



Features TX-65 Pro

- Easy in use
- Light weight (4kg)
- 50% weight reduction
- Non corroding
- No welding used
- Easy one time assembling

Suggested Retail Price: 129,95 €



PATENT
 PENDING

