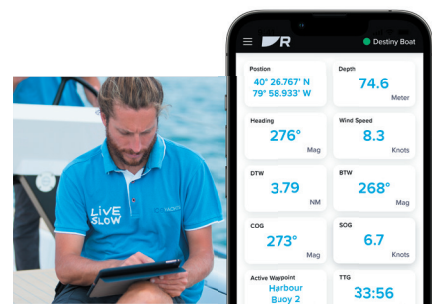
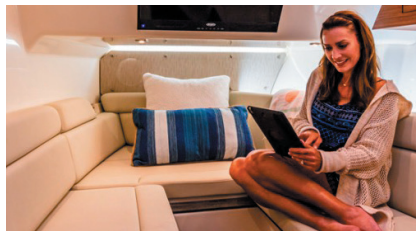
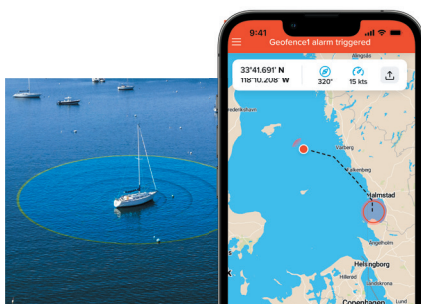


YACHTSENSE LINK

MARINE MOBILE ROUTER

YachtSense Link is a multi-purpose marine mobile router equipped with Raynet Ethernet ports, mobile broadband connectivity, and onboard Wi-Fi. YachtSense Link allows crew and family to connect Axiom® displays, phones, tablets, and PCs to a unified onboard network. YachtSense Link automatically switches between marina Wi-Fi and mobile networks to ensure you are always connected. Combine YachtSense Link with the Raymarine mobile app for remote access to your Raymarine network and enjoy the added security of remote GeoFence vessel monitoring. YachtSense Link also features low-voltage digital switching/monitoring channels for controlling and monitoring onboard electrical devices like pumps, batteries, lighting, and more.



REMOTE MONITORING

- GeoFence provides alerts and notifications if your vessel moves in or outside a safety zone.
- Low power consumption mode supports GeoFence remote monitoring (subscription required)
- 4 x input and output low voltage digital switching channels
- Easy DIY setup using a web browser or Axiom display

ALWAYS CONNECTED

- Connect Raymarine equipment, tablets, smart TVs, and other wireless devices to a unified onboard network
- Mobile broadband connection to 4G (LTE) networks (SIM card and data plan required)
- Supports dual SIM cards for seamless connectivity to international mobile networks
- Integrated GPS with a range extending 4 in 1 antenna (GPS/GNSS, 3G, 4G, and Wi-Fi)

STAY INFORMED

- Connect and view real time instrument and navigation data on board or remotely
- 4 Raynet Ethernet ports for connecting Raymarine devices
- SeaTalkNG/NMEA2000 port
- Rugged IPX6 enclosure is shock and vibration resistant



YACHTSENSE LINK SPECIFICATIONS



POWER SPECIFICATION	
Nominal supply voltage:	12 / 24 V dc
Operating voltage range:	8 V dc to 32 V dc
ENVIRONMENTAL SPECIFICATION	
Operating temperature range:	-25°C (-13°F) to + 55°C (131°F)
Storage temperature range:	-30°C (-22°F) to + 70°C (158°F)
Humidity:	up to 93% @ 40°C (104°F)
Water ingress protection:	IPx6
PHYSICAL SPECIFICATION	
Dimensions (w x h x d):	242.00 mm (9.53 in) x 162.20 mm (6.39 in) x 63.00 mm (2.48 in)
Weight:	1.03 Kg (2.26 lb)
WIRELESS NETWORKS SPECIFICATION	
Boat Wi-Fi:	Wi-Fi access point mode frequencies: <ul style="list-style-type: none"> • 2.4 GHz (2412 MHz to 2472 MHz) • 2422 MHz to 2462 MHz): 13.28 dBm
Dock WLAN:	Wi-Fi station mode frequencies: <ul style="list-style-type: none"> • 2.4 GHz:(2412 MHz to 2472 MHz / 2422 MHz to 2462 MHz): 14.79 dBm • 5 GHz (5150 MHz to 5350 MHz / 5470 MHz to 5725 MHz): 14.94 dBm • 5.8 GHz (5725 MHz to 5875 MHz): 13.74 dBm
Cellular / Diversity:	2G/3G/4G frequencies: <ul style="list-style-type: none"> • LTE-FDD: B1/B2/B3/B4/B5/B7/B8/B12/B13/B18 /B19/B20/B25/B26/B28 • LTE-TDD: B38/B39/B40/B41 • WCDMA: B1/B2/B4/B5/B6/B8/B19 • GSM: B2/B3/B5/B8

For further information including full product specifications, go to our website www.raymarine.com

21-1429-MAR / JANUARY 2022 / V1.0

Raymarine

FIND YOUR SEA

RAYMARINE.COM